



Walworth Historical Society



Volume 45

Nov. 2020

Number 3

Walworth Museum: 2257 Academy Street, P.O. Box 142, Walworth, NY 14568
WHS Website: www.walworthhistoricalsociety.org

Walworth Lions Club's Memory Garden: Part 1 By Bill Boyd

Editor's Note: For 31 years the Walworth Lions Club has had a long and active role with the town government and the town's Ginegaw Park on Lorraine Drive. This issue highlights the club's beautiful Memory Garden.

Walworth Lions Club was chartered in May of 1972. The year 2017 was the 100th anniversary of Lions Clubs International. As part of this 100th anniversary, Lions Clubs took on Centennial projects. Walworth Lions designated the Memory Garden as our centennial project in May of 2016. We reported money spent and hours expended to the International Association of Lions Clubs.



There was an existing gazebo in the park (east side of Lorraine Drive) that was not in a good position because of plans to eventually pipe and cover the drainage along Lorraine Drive (now completed in 2020). Lions proposed to the Town Board moving the gazebo across the road and placing it next to the Lions barn. Our town highway workers accomplished this with no problem.

Recognizing the need for a walkway to access the gazebo, Lion Bill Boyd proposed developing a memory garden in that area. The concept was to be partially modeled after the Alzheimer's Memory Garden at Monroe Community Hospital. The idea was to sell enough memory bricks to finance the upkeep and maintenance of the garden. The proposal was presented to the Town Board and approval was given; planning proceeded from there. This was somewhere in the 2011 – 2012 time frame. In February 2014, 750 bricks were purchased by the Walworth Lions Club. The walkway to the gazebo was finished in June of 2014 and the selling of bricks began.

Left: The gazebo is dedicated to the memory of Bob DeMay (1935 – 1996) past head groundskeeper for the park.



In July of 2014 the Walworth Recreation Department purchased the swing in memory of David Paine, another former head groundskeeper. The memory walkway was expanded to accommodate the swing in September of 2014. At the same time a tree was planted next to the gazebo on the south side in memory of Debora Germain (4/12/59 – 12/8/13), who was the Recreation Director for the town from 1990 - 2007. A Slender Silhouette Sweet Gum tree was given by Sally Welker and Carolyn Gregoire. The tree was planted in August 2014.

Discussions were started at the Lions Club's board meetings about installing a memorial to the Veterans of Walworth. Recognizing that a memorial already existed in front of the former Pacific Hotel (at that time American Pool Supply) and that the building was for sale, the Board decided to approach Lion Dave Kords about relocating the memorial to the Memory Garden.

We received approval from the Town Board to place the memorial, purchased a new mounting stone and installed the memorial in the Spring of 2016. The plaque reads "In Memory of Those That Gave Their Lives in Service – Crane Engert Post, American Legion". The stone also reads "Walworth Lions Club, May 30, 2016". In May of 2016 a new tradition was started; a Memorial Day service is held annually at the site of the Veteran's Memorial.

In 1975 Lions Club members placed a flag pole in the park in memory of Lion Bill Boyd, Sr. (1911 – 1975). Bill was a member of the Walworth Lions from 1974 to 1975. The flag pole is located close to the open air pavilion at the east side of the park.



Along with the stone and plaque, in July of 2013 the Lions proposed moving the existing memorial flag pole over to the Memory Garden. The proposal was rejected by the Town Board because the Boy Scouts use that flag pole for their annual campout in the park. Lions went ahead and ordered a new pole to be placed in the Memory Garden with an American Flag. Before installation, the town placed a flag pole in front of the maintenance building in the park with an American Flag.

So the Lions placed a military flag on the pole in the Memory Garden and dedicated the pole and the flag on July 26, 2016. The flag pole and associated lighting were completed in August of 2016.

Left: Insignias of five branches of the military on the flag.

In 2017 Lion John Aman passed away. John was a Lions member from 1982 to 2017. Lion John was well known in the community and there were many donations in his name to the Lions Club. At the same time one of our Boy Scouts was seeking an Eagle project to lead. His name is Brad Rush and he is the great nephew of Lion John Aman. Lion Bill Boyd suggested joining forces and doing a Eagle Scout Lions project. I found the plans for a pergola in Wood Magazine – July 2010 issue “Made-in-the-Shade Pergola”. Brad’s mother, Kristen Rush, is a Lions Club member and I contacted her first about this possibility. She was in favor and the project was started.



In March Brad made a presentation to the Lions Board and in April to the Town Board for approval. He also had to present to the Eagle Scout Committee for their approval as a valid Eagle Scout project. Later in April Brad and I purchased the materials for the construction. There was time lost to let the area dry enough for the Town Highway Department to complete the drainage work on the site. They installed two drain lines to help with the drainage of the area.

In June of 2017 Jim Hall, a long-time friend of the Walworth Lions Club, came with equipment to bore the support holes for the pergola. Brad and I installed the first four posts and construction was underway. Brad organized his fellow scouts to help on the project and several Lions members also took part in the construction. Brad became a Lion in 2018. Construction was complete except for the pavers by August of 2017. The stone work was completed in the fall and the dedication stone reads “John Aman 1935 – 2017”.

Left: The pergola

Next issue: Additional information about the Memory Garden and the Lions Club

Holiday Gift Suggestions By Dorothy French

With the holidays fast approaching it is not too early to think about gift giving. Items available for sale at our museum include booklets about our area, commemorative ornaments and plates, coverlets, and music CDs. Memberships at many levels are listed on page 8 of this newsletter; they are a gift that keeps on giving. Donations may be made for a memorial or for a celebration gift. We are approaching the end of the 2020 tax year, and we know that many people look at their finances as to year-end donations. For additional information, contact any of the WHS board members listed on page 8.

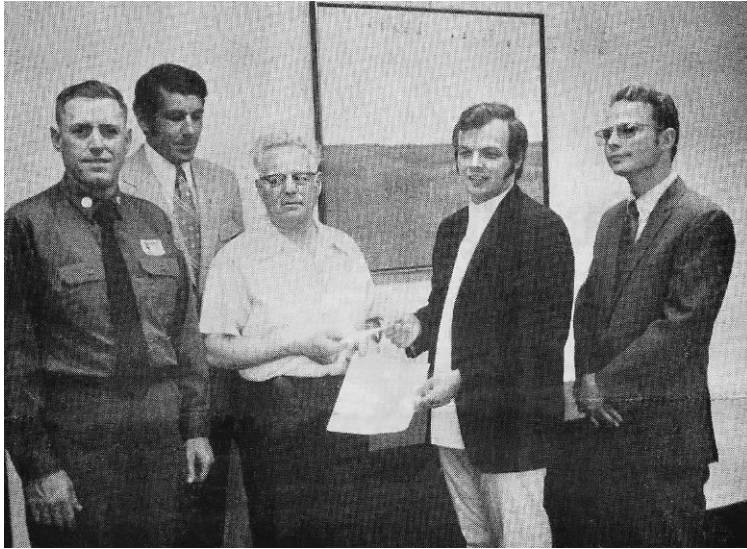
In Memoriam – Fred Enisz By Donna Stalker

Former resident Alfred (Fred) Enisz passed away June 3 in Colorado. He was born in 1949 in Austria. Fred was an occasional contributor to our newsletter. He shared photos and stories of his parents’ lives in Austria, the concentration camps and later the family’s move to America as Displaced Persons. Fred and his parents, Frederick (Fritz) and Maria Enisz, eventually settled in Walworth in 1952. Joe Finley loaned them the money to purchase a home at 3600 Main Street that was going to come up for bid at an estate auction. Fred attended Walworth Elementary School and graduated from Wayne Central High School. In 1975 Fred moved to the Denver area where he worked as an insurance agent for Prudential for most of his career. His parents remained in Walworth until 1982 when they moved to Colorado.

Editor's Note: Our series about our area's country doctors ends with this story. Thank you to Dr. Thomas Stevens for providing information about Walworth Medical Futures.

Following the sudden passing of Dr. W. H. F. Newman in 1962, the Walworth area was without a doctor for ten years. Realizing a need, local townspeople formed an organization entitled Walworth Medical Futures, Inc. Dr. Thomas Stevens was president and Ronald Buyck was treasurer.

This non-profit organization contacted the United States Public Health Service which had a new federal program designed to bring doctors to rural communities with no physicians. Under this program, the federal government's Department of Health, Education and Welfare would pay the salaries of the doctor and a registered nurse; the community would supply the office and equipment. A doctor would be assigned for two years working through the United States Public Health Services but under the guidance of Walworth Medical Futures, Inc.



Left: Presenting a \$1,000 check as a loan to Walworth Medical Futures, Inc. from the Walworth Fire Department treasurer is Jerome Magin (third from the left) to Dr. Thomas Stevens (president of Walworth Medical Futures, Inc.).

Looking on are (from left to right) Eugene Van De Walle (Walworth Fire Department chief), Ronald Buyck (treasurer), and Earl Ledden (extreme right) vice-president and treasurer of the Walworth Medical Futures, Inc. This helped establish the newly assigned physician to the Town of Walworth.

Regular fees would be charged for services and all revenues generated would sustain the office facilities, pay for equipment which will be supplied and maintained by the corporation, and, hopefully, pay back all loans solicited. New Wayne Communities, Inc., developer of Gananda, worked with Walworth Medical Futures, Inc. to make this happen.

That is how, in 1972, Dr. Gary Lamphere, age 27, became the first new doctor to practice here in almost a decade. However, before he could move here, Walworth Medical Futures, Inc. began a fund drive to offset the approximately \$15,000 cost of setting up the doctor's office in the Walworth Professional Building at 2100 Walworth-Penfield Road.

Donations came from many sources with a goal between \$10,000 and \$30,000:

- New Wayne Communities (Gananda) co-endorsed with Walworth Medical Futures, Inc. a line of credit up to \$30,000 from the Marine Midland Bank in Palmyra and agreed to underwrite any interest charges of Marine Midland. Stuart Moot, president of NWC, presented a check for \$1,000 to Dr. Stevens to be applied to interest on borrowed funds of WMF, Inc. This would provide time for funding by local Walworth area contributions.
- Area residents, businesses and organizations were called on to contribute during a fund-raising campaign.
- The Walworth Fire Department loaned \$1,000 from proceeds of sales of fire extinguishers and from their hot dog tent and pizza sales over the previous two years. It was a donation of fire department funds, earned by projects and activities, in support of the health needs of the Town of Walworth.

The fund drive was successful and – according to Mildred Reynolds' scrapbook of August 1, 1972 - a community reception was held for Dr. Lamphere, his wife Judith and their one-year old daughter. Dr. Lamphere graduated from the University of Rochester Medical School and completed his residency in Chicago.

According to Dr. Stevens, in June 1974 the Lampheres moved to Exeter, NH following the doctor's two-year commitment to Walworth. Dr. Lamphere was later affiliated with Manchester Veteran Affairs Medical Center as an emergency room specialist in Manchester, NH.

A Tour of Main Street: #3720 (Southeast Corner) – Part 2 By Dorothy French

Editor's Note: *The southeast corner of Main Street and Walworth-Marion Road is the last site in our "Tour of Main Street" feature. It has been the location of many businesses, some as early as 1875. Did you know that originally there were two stores located there? See our September 2020 issue for more information.*

1936: Ray and Frances Pembroke built a Red and White grocery store in the central area where the previous two stores were located and destroyed by fire in 1910. Through the years, other store managers included Minford and Naomi Kessler, Jerome and Marge Magin, and Larry and Viola Stubbings. Later George and Joyce (Appleman) Haag operated an appliance store there which closed in the 1950's.

1968: Walworth Post Office moved from the Grange building on the west side of Main Street to the building on the southeast corner. The building's owner was Keith Hartung.

1984: Building sold by Keith Hartung to Gene and Pam Bavis. Gene had a lease with the federal government for the building, which was 800 sq. feet on a postage stamp-size lot. When it was time for the lease to be renewed, the government told Gene it required 3,000 sq. feet for office space.

1987: Post Office moved to the mini-mall on Walworth-Marion Road. Gene and Pam renovated the building and operated Walworth Washland for 11 years.

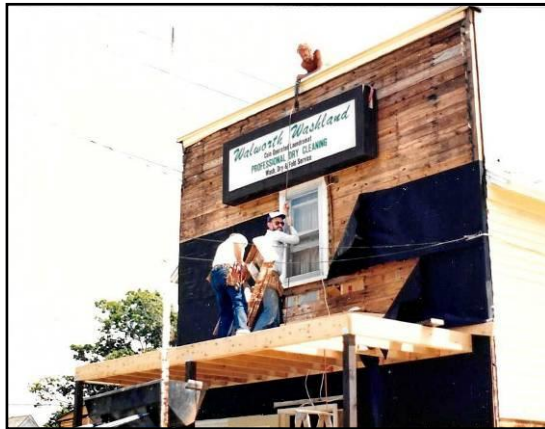
1998: Gene and Pam Bavis sold the property to Carla Cleary, who operated Cleary Insurance Agency there.

2016 to current: Carla Cleary sold The Cleary Insurance Agency to Eastern Shore Associates Insurance Agency, an organization with over 80 experienced employee-owners operating from six locations throughout Central and Upstate New York.

This completes our tour of Main Street.



1958: Red and White Store



1987: Walworth Washland



1998: Cleary Insurance



1987: Post Office



2016: Eastern Shore Associates

Editor's Note: Larry Thedens described himself as "an old Marine from West Walworth who has been there, seen that, and done that." Larry's parents were Walter and Norma (Valentine) Thedens. In 2008 Larry was living in Dover Plains, New York, and decided to add his knowledge of the Valentine family to a previously published genealogy by Elsie Gersner Valentine. He retired in 2006 after 37 years as an operating engineer.

The first Valentines came to the United States in the 1700's and bought farm land in Hempstead, Long Island, New York. They then moved to Hoosier Falls, New York, five miles west of Bennington, Vermont. Sometime later they moved to West Walworth and the farm on the north side of Penfield Road between Canandaigua and West Walworth Roads. They raised their family and farmed there for many years.

At some time the home burned and my grandfather, Walter Valentine, tore down the barn west of the house, re-cut the lumber and rebuilt the new home on the old barn foundation. When you look up in the basement you can see the old logs used for the barn floor; as far as I know they are still there. There were at least 10 barrels of hard cider on the basement's dirt floor.



Circa 1924: Walter and Gertrude Valentine and their 11 children in front of the family's 14 room home on Penfield Road, West Walworth.



The Valentine family farm is located west of The Ballroom at Carey Lake, 937 Penfield Road.

In the above left photo in the front row from left to right are Margaret, Edith, Gertrude, Norma, Walter, Irene and Evelyn. In the back row are Mildred, Viola, Edgar, Carl, Hazel, and Earl. Baby Richard was stillborn and is buried in front of the house.

The Valentine farm had about 185 acres when I lived on the west side of the house around 1944. Included were 4 acres of apples, 4 acres of prime muck land in the northwest corner butting up to Raymond Welker's farm. Jim Downs, Bob Downs' dad, owned the farm west of Valentines. Nortier was to the east and Jack Demfrey's farm was across Walworth-Penfield Road to the south. John Knight had the farm on the hill on the south side of Penfield Road across from Uncle Jess and Aunt Edith (Valentine) Morrison's home. They also had a smoke house; west of that in the hill was the large dry house.

To be continued

A Look at Some of Our Collection

By Jessie Keymel

Our collection seems to have a mind of its own. Among the memorabilia we received recently is a family collection of infant clothing from the 1914 era. I cannot imagine the time it took to maintain clothing for an infant. It is mostly white cotton material and would take a lot of care to keep it looking pretty and usable. There are also hand-knitted socks, booties and little jackets. Some of this clothing is wool and has to be handled with care to prevent it from shrinking. And we have not mentioned diapers or under garments.

Think washing by hand, drying on a clothes line or over a drying rack, heating the iron by the stove, and pressing all the tiny pleats and decorations that were added to make each garment special. I am sure most mothers did not just turn on the faucet and get heated water. Heating water would have been the first order of business early Monday morning. It must have taken all day every Monday to get the week's laundry washed. Tuesday would be reserved for ironing. Perhaps this is one of the reasons that everyone only had clothes for play, school and special clothes for church on Sunday - certainly not the abundance of garments we have today. Another time we will write about the wedding dresses that are stored in our cedar closet.



Saluting the VFW By Dorothy French

For ten years (1996 – 2006) the members of the Veterans of Foreign Wars Post No. 8458 were a visible presence in the Walworth community.

During those years, the veterans participated in numerous events, including a gravestone dedication of Stephen Bancraft, a Revolutionary War soldier buried in Baker Road Cemetery; a two-year clothing donation program at Canandaigua VA Hospital; Memorial Day tree planting at Walworth town hall; Festival in the Park parades; and Armed Forces Day at Palmyra Fairgrounds. In addition, they were instrumental in designating Route 31 in Wayne County as a Memorial Highway honoring all past, present and future veterans.

Sadly, due to age and health issues, the Post disbanded and members transferred to other local VFW posts according to Stephen Yuschak, Post Adjutant. Steve is a Navy veteran who served in Vietnam. Post Commander for the last three years (2004, 2005 and 2006) was Dr. Robert Lockemeyer, a Korean War Army veteran. Bob's VFW jacket and cap were recently donated to the WHS by his widow, Mrs. Sharon Lockemeyer.

Left: In the photo from left to right are Stephen Yuschak and Dr. Robert Lockemeyer



Wayne County Bicentennial Updates

By Gene Bavis, Wayne County Co-Chair

The Wayne County Bicentennial Committee and subcommittees continue to move forward with our plans for the 2023 celebration of Wayne County's History and Heritage. The next meeting of the committee will be on November 4 via Zoom. About 25 people representing a cross section of our county are on this committee which meets quarterly to help coordinate and communicate the plans being developed. Town Committees are a very important part of this communication and planning system and Walworth is fortunate to have an active committee under the leadership of Town Board Member, Amber Linson.

Some of the more recent happenings are:

- Bob Mogray, with the help for Dorothy & Sonny French, has traveled to each town in the county to photograph sites for the photo quilt. Town Historians will soon be selecting photos to be used.
- A meeting was held to discuss the Wayne County NY Challenge. Young people (and the young at heart) will be given a booklet in either print form or on-line as a PDF to follow. They will find and react to questions about historic sites around Wayne County. This will hopefully be ready for distribution by spring.
- The first of a series of PowerPoint programs about Wayne County has been completed at least in its "pilot" version and presented once via Zoom. It was well received. The committee met again on 9/29. It will be presented to the Walworth Committee for the Bicentennial at their November meeting.
- The Commemorative 2022-2023 Wayne County Calendar is moving along nicely and will be published next spring. We need a few more dates. If anyone loves to look things up, we could use a few more volunteer researchers. Contact me, please.
- I am continuing to recruit volunteers for bicentennial activities and hope to hold a meeting with all of the Wayne County Library Directors soon.

From Your President By Jessie Keymel

Our museum continues to be taken care of during this difficult time when we all have retreated to our own corners. Gene Bavis continues to mow the lawn. Judy McMillan and Becky Appleman have had some of the overgrown trees removed from the north side of the building. Ed Stalker and his grandson Cameron washed the north wall and Ed helped with the tree trimming earlier this year when we spruced up the yard for summer. Thank you Ed and everyone who pitched in. Bob Mogray has offered his photo expertise to the Wayne County Bicentennial Committee as they get ready for the year of celebration in 2023. Often there is a sharing between the town historical societies; our histories of families and events frequently overlap. We hope to be back next year with some of the interesting programs that we had to delay because of COVID-19. We look forward to a new start in 2021. Keep safe and thank you for your support.

Honoring Our Veterans By Dorothy French

The cemeteries in the Walworth area are the final resting place for the men and women who served our country in the military. Thank you to Doug Churchill for the work he did documenting these graves in 2007-2008. Unfortunately, more veterans have passed away since 2008. **Total number of veterans buried in Walworth cemeteries prior to 2008 is 93.**

<u>War</u>	<u>Baker Road</u>	<u>Finley</u>	<u>Freewill</u>	<u>Gould</u>	<u>Lusk</u>	<u>McCreary Arnold</u>	<u>Walworth</u>	<u>West Walworth</u>
Boer	-	-	-	-	-	-	2	-
Civil	5	-	7	5	1	-	16	7
Korean	-	-	-	-	-	-	1	3
Mexican	-	-	-	-	-	-	-	1
Persian Gulf	-	-	-	-	-	-	1	1
Revolutionary	3	-	1	1	-	-	-	1
Spanish/American	-	-	-	-	-	-	1	-
Vietnam	-	-	-	1	-	-	3	1
War of 1812	1	-	2	1	-	-	3	2
WW I	1	-	1	-	-	-	1	5
WW II	1	-	1	-	-	-	12	4
TOTAL	11	-	12	8	1	-	40	26

From WCTA Federal Credit Union to Reliant at 50 Years By Larry L. Ruth

In 1970 I was president of the Wayne Central Teachers' Association and representative to the Wayne County Teachers' Association (WCTA). Karel Vogus, the president of Irondequoit Teachers' Association, contacted me asking if Wayne Central would be interested in creating a credit union for teachers. After some thought I told him I did not think Wayne Central was large enough to form a credit union, but suggested that the Wayne County Teachers' Association might be interested. The information was passed on to Don Rhine, president of WCTA.

Shortly afterward Don put the topic on the WCTA agenda for our next meeting and invited Karel Vogus to make a presentation. At that time WCTA was holding meetings in Don Rhine's science room in the Sodus High School with representatives from the eight county school districts. Unfortunately, the minutes from that meeting and those that followed have been lost. The details are but a vague memory. However, the end result was that WCTA Board members agreed to purchase five shares each for \$5.00 a share. This was the beginning of the WCTA Federal Credit Union.

One of the original selling points for teachers was setting up a summer savings program. Teachers received no pay during July/August; this program allowed them to spread their annual salary over twelve months. After a charter was drawn and the officers were elected; it was determined the officers would receive the first membership numbers. While I was among the first to sign up, I delayed purchasing my shares and ended up as account 12.

Each school district had volunteers who acted as contacts or liaisons with the Credit Union. At the inception of the WCTA Credit Union only teachers and educators were able to become members. Later it was opened to all school employees, and at some point soon after membership opened to the children of members. Finally it was opened to the public in general.

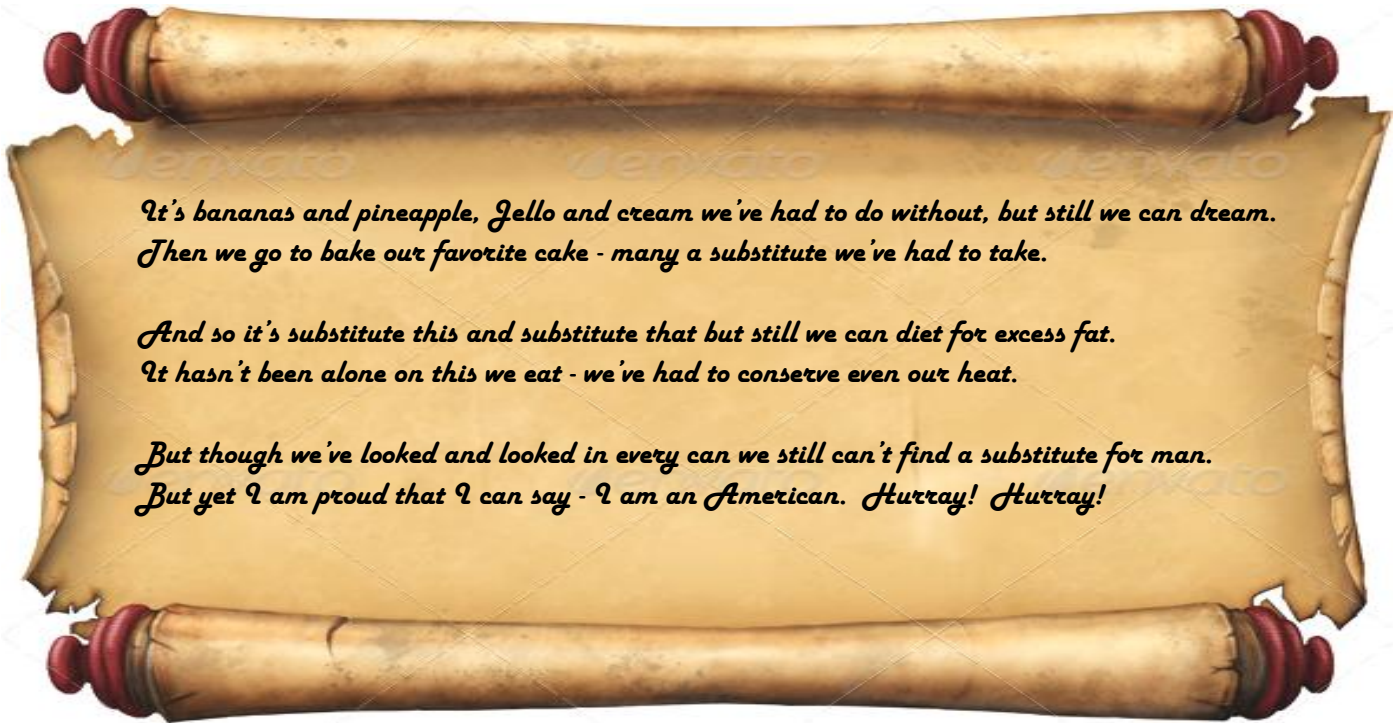
In the beginning all business was conducted at Sodus in Don Rhine's science room. Later an office was set up in a small building on the east side of Sodus on Old Route 104. The building was large enough for Don and his secretary, Carol (I think). Our first real office was built in Sodus across the street from the Sodus High School where it all began. The first office outside of Wayne County was in Canandaigua.

When Don first presented this idea to the Wayne County Teachers' Association, concern was expressed that opening membership outside of the county might adversely affect our members. That concern has proven unfounded. Today there are nine branches in Wayne, Ontario, and Monroe counties. The last time I met Don we reminisced over the history of the Credit Union. While we both understood the reason for the name change, we felt that the identity of those who had founded the Credit Union had been lost.

Recently it was announced that the logo was changed to Reliant Credit Union. Currently Pamela Heald is President and CEO. In spite of cosmetic changes, the Credit Union has remained true to its mission and maintains a strong community partnership.

World War II Food Shortages

The following poem from our museum files was written by Mrs. George J. (Ethel) Frowley, Jr. in April 1946:





The Walworth Historical Society wishes to thank the Reliant Community Credit Union for the excellent job in not only color printing the cover of this newsletter as they have since 2014, but for color printing this entire newsletter to be sent to those who do not have access to a computer and receive this publication by the U.S. Mail.

WHS Officers, Trustees, and Committee Chairs

Officers and Trustees

President	Jessie Keymel	(315) 524 - 9205
Vice-President	Robert Mogray	(585) 576 - 4156
Secretary	Judy McMillan	(315) 524 - 4219
Treasurer	Linda Pembroke	(585) 455 - 7595
Asst. Treasurer	Judy Markowski	(315) 524 - 8649
WHS Trustee	Becky Appleman	(315) 524 - 3289
WHS Trustee	Gene Bavis	(315) 573 - 2768
WHS Trustee	Mary Jane Devlin	(315) 986 - 1512
WHS Trustee	Dorothy French	(315) 986 - 1098
WHS Trustee	Judy Markowski	(315) 524 - 8649
WHS Trustee	Larry Ruth	(315) 524 - 7936

Committees and Chairpersons

Bldg. Maint.	Gene Bavis	(315) 573 - 2768
Collections	Jessie Keymel	(315) 524 - 9205
Displays-Museum	Judy Markowski	(315) 524 - 8649
Displays-Town Hall	Judy McMillan	(315) 524 - 4219
Genealogy	Ellen Dietterick	(585) 200 - 4685
Grounds	Vacant	
Hospitality	Liz Bavis	(585) 802 - 0380
Membership	Linda Pembroke	(585) 455 - 7595
Newsletter	Robert Mogray	(585) 576 - 4156
Publicity	Becky Appleman	(315) 524 - 3289
Town Historian	Gene Bavis	(315) 573 - 2768

November 2020 Email Newsletter extra photos



The Lodge at Ginegaw Park in Walworth with the fall colors



The Walworth Historical Society Museum this autumn



Rural scene in the Walworth area

Cream Ridge Road barn and silos



The old Pacific Hotel in Walworth in its current condition. It is still for sale.